

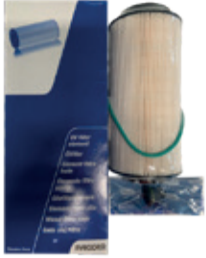


## MARCH SPECIALS

VALID UNTIL 31 MARCH 2024

### DAF EURO 6 FILTER KITS

**\$200**



**344**  
Kit Filter B Service MX11 E6  
Engine filter service kit Suits  
DAF E6 with MX11 engine



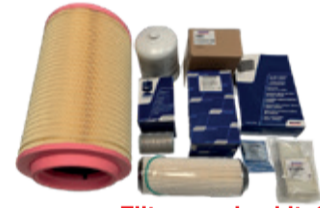
**\$200**

**533**  
Kit Filter B Service MX13 E6  
Engine filter service kit Suits DAF E6  
with MX13 engine

**\$750**



**677**  
Kit Filter C Service MX11 E6  
Filter service kit Suits DAF E6 with MX11 engine



**\$900**

**763**  
Kit Filter C Service MX13 E6  
Filter service kit Suits DAF E6 with MX13 engine

### VORLANDI COUPLINGS

**\$1,850**



**E55**  
Vorlandi 50mm Auto Coupling  
Comes with warning function



**\$1,850**

**E551**  
Vorlandi 50mm Manual Coupling  
Comes with warning function

### HOLLAND TOP PLATES

**\$2,600**



**XA331EA**  
Holland Turntable Top Plate Non Lube  
Holland top plate with telfon wear pads



**\$2,350**

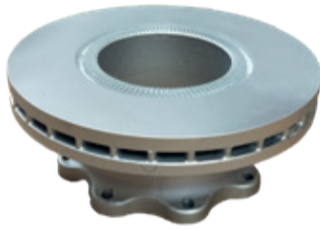
**XA351A-P**  
Holland Turntable Top Plate Lube  
Holland top plate without telfon wear pads

### HENDRICKSON

**\$300**



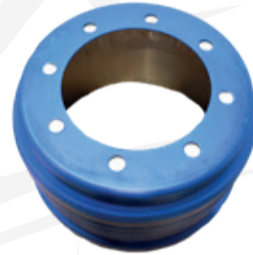
**97017-006**  
Hendrickson 15" Brake Lining Kit  
Hendrickson intraxx brake lining set, does 1 axle



**\$375**

**D-33390**  
Hendrickson Intraxx Rotor

**\$289**



**HSS-27826**  
Hendrickson Brake Drum  
15" x 8 5/8" 8 stud 275PCD



**\$470**

**98881-021**  
Hendrickson Intraxx Brake  
Pad Kit  
Does one axle set

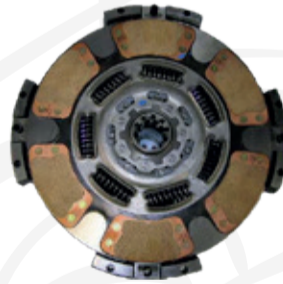
**\$130**



**C-25029-40**  
Hendrickson Brake Shoe 15" Brake  
Sold individually

### EATON CLUTCH

**\$1,850**



**308925-25**  
Eaton Easy Pedal 15" x 2"  
VCT 10 Spline  
Suits 2050 ft/lbs torque Cat  
C15 Cummins ISX



**\$2,050**

**308935-271**  
Eaton Easy Pedal 15" x 2"  
DCF 10 Spline  
Suits 1850 ft/lbs max torque

### TRP CAT COOLANT

**\$25**



**CTEC3501**  
CAT premixed longlife coolant  
1 US Gallon / 3.75 litres

### WHEEL ARCH FLARES

**\$490**



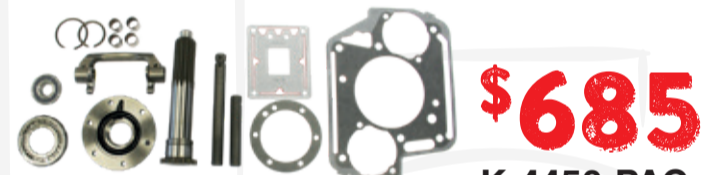
**KW08P004**  
KW S/S Wheel Arch Flares T904/908/909  
Suits Kenworth T909 without factory  
fitted rubber wheel arch trims

### EATON CLUTCH INSTALL KITS

**\$650**



**312532X**  
Kit Clutch Fork + Shaft  
Suit KW / DAF  
with Roadranger



**\$685**

**K-4450-PAC**  
Clutch Install Kit 2" 14 Spline  
RTLO22918B with 14 spline input shaft  
Suits KW, Freightliner, Navistar, Western Star

**\$590**



**K2468**  
Clutch Install Kit 2" 10 Spline  
Suits KW, Freightliner, Navistar, Western Star

### DAF ROTOR

**\$335**



**1812563**  
DAF Front Disc Brake Rotor  
Suits DAF 75/85/95/105, Foden Alpha ii



**\$280**

**1982826**  
DAF Disc Brake Pad Kit  
Suits DAF 75/85/95/105,  
Foden Alpha ii does one axle



**WORK LIGHTS**

**\$50**

**TXL9573**  
Work Lamp 115mm Round  
LED work lamp with 6 LEDS 27 watt



**\$60**

**TXL9526**  
Work Lamp 115mm Square  
LED work lamp with 9 LEDS

**\$45**

**TXL9572**  
Lamp Work 115mm Square  
LED work lamp with 5 LEDS



**ANCR CORNER POLE**

**\$70**

**50451-11**  
Pole Corner Board Placement Tool  
Extends from 1.22 - 2.5m



**AIRGLIDE REAR SHOCKS**

**\$275**

**K374-41**  
Shock Absorber AG200  
Suits KW & DAF Euro 4/5



**\$290**

**K374-38**  
Shock Absorber AG200/AG460  
Suits late KW AG200 early AG460 46000 lbs



**\$385**

**90-2478SP3**  
Shock Absorber AG460  
Koni AG460 10.5" heavy duty shock

**TRP CLUTCH INSTALL KIT**

**\$490**

**CL1771TRP**  
Clutch Install Kit 2" 10 Spline Upto 1850 FTLBS  
Suits KW, Freightliner, Navistar, Western Star



**DOMETIC FRIDGE**

**\$285**

**WAETCX-21FL**  
Cooler Thermo 21 Litre  
12/24/240v 21L fridge cool down to 1 deg, heat up to 65 deg



SAVE over 25%

**ANCR SAFETY CARGO BAR**

**\$60**

**50441-10**  
Safety Cargo Bar  
Steel safety cargo bar extended length 2.27m



**TRP SLACK ADJUSTER**

**\$175**

**SA10202**  
Slack Adjuster Auto  
Auto slack 1 1/2 " 28 spline



**AIR CONDITIONING COMPRESSOR**

**\$1,380**

**2041760**  
DAF Air Con Compressor MX  
Suits DAF MX engine



**\$860**

**F69-1006-211**  
KW Air Con Compressor T/K Series  
Suits T/K Series not for T410/T610

**DAF COOLANT**

**\$35**

**1602270**  
DAF Coolant 5 Litres  
DAF premixed longlife



**\$290**



**1602271**  
DAF Coolant 20 Litres  
DAF premixed longlife

**\$210**

**\$1,600**

**1602272**  
DAF Coolant 210 Litres  
DAF premixed longlife



**KW / DAF BUCKET HATS**

**\$15**

**KENC1402**  
KW Bucket Hat Black / Red  
Black with embroidered KW logo



**\$12.50**

**M004138**  
DAF Bucket Hat



**\$16**

**KEN200068**  
KW Bucket Hat Reversible  
Black or red



**VEHICLE SAFETY**

**\$15.65**

**TS205**  
H Sticker Sign HPMV  
H Sticker 200mm x 200mm yellow reflective



**\$25**

**TS605**  
DG Document Holder  
Velcro fastener

**TRP BRAKE PADS**

**\$150**

**908138**  
Disc Brake Pads  
Suits SAF with Pan 19 caliper



**\$120**



**1970349**  
Disc Brake Pads  
Suits SAF with Knorr caliper

**KENWORTH SINGLET**

**\$55**

**KEN200045**  
Singlet KW Black Since 1923  
Available in sizes M-5XL



**BOOST INTERCOOLER HOSES**

**\$97**

**D1029-8748**  
Hose Intercooler 4"  
4" diameter x 6" long intercooler hose 2 hump with rings



**\$165**



**D1029-8761**  
Hose Intercooler 4" x 4.5"  
4" x 4.5" diameter x 6" long

**\$198**

**D1029-8761XL**  
Hose Intercooler 4" x 4.5"  
4" x 4.5" diameter x 7" long



**\$115**



**D1029-8699**  
Hose Intercooler 4"  
4" x 4" x 6" long single hump with 2 rings

**\$176**

**D1029-8701**  
Hose Intercooler 4" Extra Long  
4" x 4" x 8" long



## KENWORTH WASH BUCKET

# \$130

**Y99-KW-1007-S**  
KW Cleaning Gift Bucket

Contains pro wash, spray wax, degreaser, tyre gloss, ceramic sealant, tyre gel applicator, wash mitt, ceramic glass cleaner, leather cleaner & condition, chamois, microfibre cloth



## TRP BRAKE DRUMS

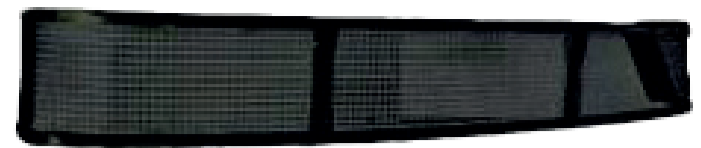
# \$190

**G11**  
Drive Axle Brake Drum  
16.5" x 7"

10 stud 285mm PCD,  
TRP by Paccar cast drum 48kg  
Suits KW, Freightliner, Mack,  
Navistar, Western Star



## DAF EURO 5 STONEGUARD



**XXSG100SBDAF**  
DAF Stoneguard 75/85, CFII, ALPHA  
Suits Euro 5, does not fit Euro 6

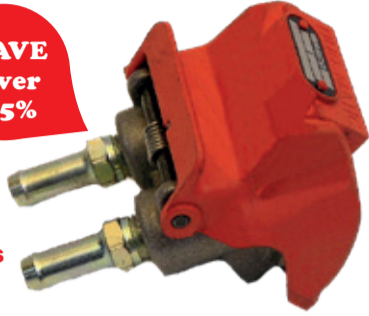
# \$150

## DUOMATIC

# \$15

SAVE  
over  
25%

**SHBT804001**  
Duomatic Male Half  
Ex new truck delivery km's



## MERITOR BRAKE DRUM 16.5" x 6"

SAVE  
over  
10%

# \$330

**3219Q5997**  
Brake Drum MFS73 16.5" x 6"  
Meritor 16.5" x 6" 25mm stud  
hole front brake drum



# \$270

**DB017TRP**  
Drive Axle Brake Drum  
16.5" x 7"

10 stud 285mm PCD, TRP by  
Paccar centrifuse drum 39kg  
Suits KW, Freightliner, Mack,  
Navistar, Western Star

## TRP BRAKE ROTORS

# \$150

**1549412**  
Disc Brake Rotor SAF  
Replaces BPW 0308834037  
275 PCD 8 stud 22mm hole



# \$130

**1549379**  
Disc Brake Rotor  
Replaces BPW 0308834017  
275 PCD 8 stud without ABS



# \$210

SAVE  
25%

**DB016TRP**  
Steer Axle Brake Drum 16.5" x 5"  
10 stud 285mm PCD,  
TRP by Paccar cast drum 42kg  
Suits KW, Freightliner, Mack,  
Navistar, Western Star



# \$150

**1549383**  
Disc Brake Rotor  
Replaces BPW 0308834137  
Disc brake rotor



## KENWORTH TRUCK WASH

# \$20

**Y99-KW-1000-1L**  
Kenworth Pro Wash 1 litre  
Concentrate up to 200:1,  
biodegradable, pH neutral



# \$52

**Y99-KW-1000-5L**  
Kenworth Pro Wash 5 litres  
Concentrate up to 200:1,  
biodegradable, pH neutral



# \$169

**Y99-KW-1000-20L**  
Kenworth Pro Wash 20 litres  
Concentrate up to 200:1,  
biodegradable, pH neutral



SAVE  
over  
20%

# \$25

**Y99-KW-1004-1L**  
Kenworth Degreaser 1 litre  
Concentrate up to 50:1,  
biodegradable, non-flammable  
Water based, low caustic



# \$65

**Y99-KW-1004-5L**  
Kenworth Degreaser 5 litres  
Concentrate up to 50:1,  
biodegradable, non-flammable  
Water based, low caustic



# \$151

**Y99-KW-1004-20L**  
Kenworth Degreaser 20 litres  
Concentrate up to 50:1,  
biodegradable, non-flammable  
Water based, low caustic



# \$28

**Y99-KW-1001-1L**  
Kenworth Wash & Wax 1 litre  
Concentrate up to 200:1,  
biodegradable, pH neutral  
High level of synthetic waxes  
coupled with SiO2



# \$67

**Y99-KW-1001-5L**  
Kenworth Wash & Wax 5 litres  
Concentrate up to 200:1,  
biodegradable, pH neutral  
High level of synthetic waxes  
coupled with SiO2



# \$169

**Y99-KW-1001-20L**  
Kenworth Wash & Wax 20 litres  
Concentrate up to 200:1,  
biodegradable, pH neutral  
High level of synthetic waxes  
coupled with SiO2



# \$30

**Y99-KW-1005-1L**  
Kenworth Tyre Gloss 1 Litre  
Water based gel used for  
tyres, exterior, rubber,  
mudguards & mudflaps



# \$100

**Y99-KW-1005-5L**  
Kenworth Tyre Gloss 5 Litres  
Water based gel used for  
tyres, exterior, rubber,  
mudguards & mudflaps



# \$250

**Y99-KW-1005-20L**  
Kenworth Tyre Gloss 20 Litres  
Water based gel used for  
tyres, exterior, rubber,  
mudguards & mudflaps



# \$50

**Y99-KW-1003-500ML**  
Kenworth Ceramic Sealant 500ml  
Water based ceramic protection  
against UV & road grime  
leaves silky deep gloss finish



# \$80

**Y99-KW-1003-1L**  
Kenworth Ceramic Sealant 1 Litre  
Water based ceramic protection  
against UV & road grime  
leaves silky deep gloss finish



# \$280

**Y99-KW-1003-5L**  
Kenworth Ceramic Sealant 5 Litres  
Water based ceramic protection  
against UV & road grime  
leaves silky deep gloss finish



**SUMMER DEALS**

**\$95**

**TRPPW20**  
TRP Premium Truck Wash n' Wax  
20 litres



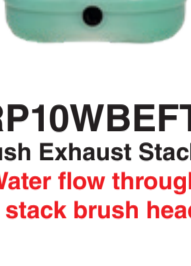
**\$78**

**TRPSW20**  
TRP Super Truck Wash  
20 litres



**\$68**

**TRPAW20**  
TRP Truck All Wash  
20 litres



**\$70**

**TRP10WBEFT**  
Brush Exhaust Stack  
Water flow through  
exhaust stack brush head



**\$75**

**TRP32WPFT**  
Wash Pole 3.2m  
3.2m adjustable length, water flow through



**\$49**

**TRP25WPFT**  
Wash pole 2.5m  
2.5m adjustable length, water flow through



**\$25**

**RT208GRAY**  
Brush Head 13"  
13" brush head

**\$32**

**TRP15BBH**  
Brush Head 15"  
15" brush head



**\$32**

**TRP10QBH**  
Brush Head 10" Quad  
10" quad brush head bristles on the side



**LINED BRAKE SHOES WITH ANCHOR PIN KIT (DOES ONE WHEEL)**

**\$160**

**4715QPLS**  
Lined Brake Shoe  
16.5" x 6"  
Suits KW with MFS73  
front axle



**\$120**

**4515QLNS**  
Q-Type Lined Shoe 4515  
16.5" x 7" drive axle  
Suits KW, Freightliner, Mack, Western  
Star, Navistar with Meritor Q brakes



SAVE  
up to  
25%

**\$150**

**4720QPLS**  
Q-Plus Lined Shoe 4720  
16.5" x 5" steer axle FG941, MFS66  
Suits KW, Freightliner, Mack,  
Western Star, Navistar with Meritor Q-Plus brakes



**\$118**

**4707QPLS**  
Q-Plus Lined Shoe 4707  
16.5" x 7" drive axle  
Suits KW, Freightliner, Mack, Western  
Star, Navistar with Meritor Q-Plus brakes

**RINGFEDER**

**\$1,590**

**1747387**  
Ringfeder Assy 50mm  
5050B Auto coupling



**VENTA LED HEADLIGHT**

**\$375**

**TXL9900**  
Headlamp 7" LED  
Venta LED headlight Insert 7"  
round with park light



SAVE  
over  
22%

**TRP AEROSOL**

**\$9**

**908386**  
White Lithium  
Grease 400ml



**\$9**

**908372**  
Paint Grey  
Matt 400ml

**\$10**

**1962686**  
Paint Grey Primer  
400ml



**\$9**

**908381**  
Glue Sticker  
Remover 400ml

**\$9**

**908373**  
Paint Grey  
Gloss 400ml



**\$12**

**908382**  
Dry Glide  
PTFE Teflon  
Spray 400ml

**\$12**

**908380**  
Silicone Spray  
400ml



**\$9**

**908361**  
Paint Black  
Gloss 400ml

**\$8**

**908390**  
Insect Cleaner  
400ml



**\$9**

**908375**  
Paint Black  
Matt 400ml

**TRP SPRING BRAKES**

**\$79**

**2430TRP**  
2430 Spring Brake Assy.  
Make to length shaft  
Includes clevis



**\$65**

**3030SBTRP**  
3030 Spring Brake Assy.  
Make to length shaft  
Includes clevis



**PRICES VALID UNTIL 31 MARCH 2024 OR WHILE STOCKS LAST. PRICES EXCLUDE GST.**



**AUCKLAND**  
Ph: 09-263 7710

**HAMILTON**  
Ph: 07-222 2041

**ROTORUA**  
Ph: 07-345 9761

**GISBORNE**  
Ph: 06-261 5660

**NEW PLYMOUTH**  
Ph: 06-262 0009

**PALMERSTON NORTH**  
Ph: 06-222 3400

**CHRISTCHURCH**  
Ph: 03-344 0252

**TIMARU**  
Ph: 03-264 6000

**TRP DEALER NETWORK**

**NORTH ISLAND**

**KERIKERI**  
Commercial Diesel  
PH: 09-407 5514

**WHANGAREI**  
Commercial Diesel  
PH: 09-438 6915

**WARKWORTH**  
Commercial Diesel  
PH: 09-425 8456

**MT. MAUNGANUI**  
Truckline Services  
PH: 07-575 3883

**TOKOROA**  
Heavy Diesel Ltd  
Ph: 027-345 2536

**TAUPO**  
Taupo Diesel Solutions  
Ph: 07-377 4324

**GISBORNE**  
Coastline Truck Services  
Ph: 06-281 0121

**NEW PLYMOUTH**  
Egmont Diesel Services  
Ph: 06-756 6650

**NAPIER**  
Eastern Truck Parts & Service  
Ph: 06-843 0400

**WANGANUI**  
Emmetts Service Centre  
Ph: 06-344 5055

**PALMERSTON NORTH**  
Emmetts Service Centre  
Ph: 06-354 2691

**MASTERTON**  
Commercial Fleet Services  
Ph: 06-370 1649

**WELLINGTON**  
North City Diesel  
Ph: 04-237 8926

**SOUTH ISLAND**

**NELSON**  
CVC Nelson  
Ph: 03-546 4605

**BLenheim**  
Transport Repairs  
Ph: 03-578 9574

**CHRISTCHURCH**  
Transport Repairs  
Ph: 03-349 6597

**CHRISTCHURCH**  
HDPS  
Ph: 03-349 2009

**TIMARU**  
HDPS  
Ph: 03-686 6663

**CROMWELL**  
Transport Repairs  
Ph: 03-445 4526

**DUNEDIN**  
Dunedin Truck Servicing  
Ph: 03-479 0150

**GORE**  
Transport Repairs  
Ph: 03-208 3008

**INVERCARGILL**  
Transport Repairs  
Ph: 03-263 4750